

CJ

1836

.F8



Varieties  
U. S. CENTS  
1794.

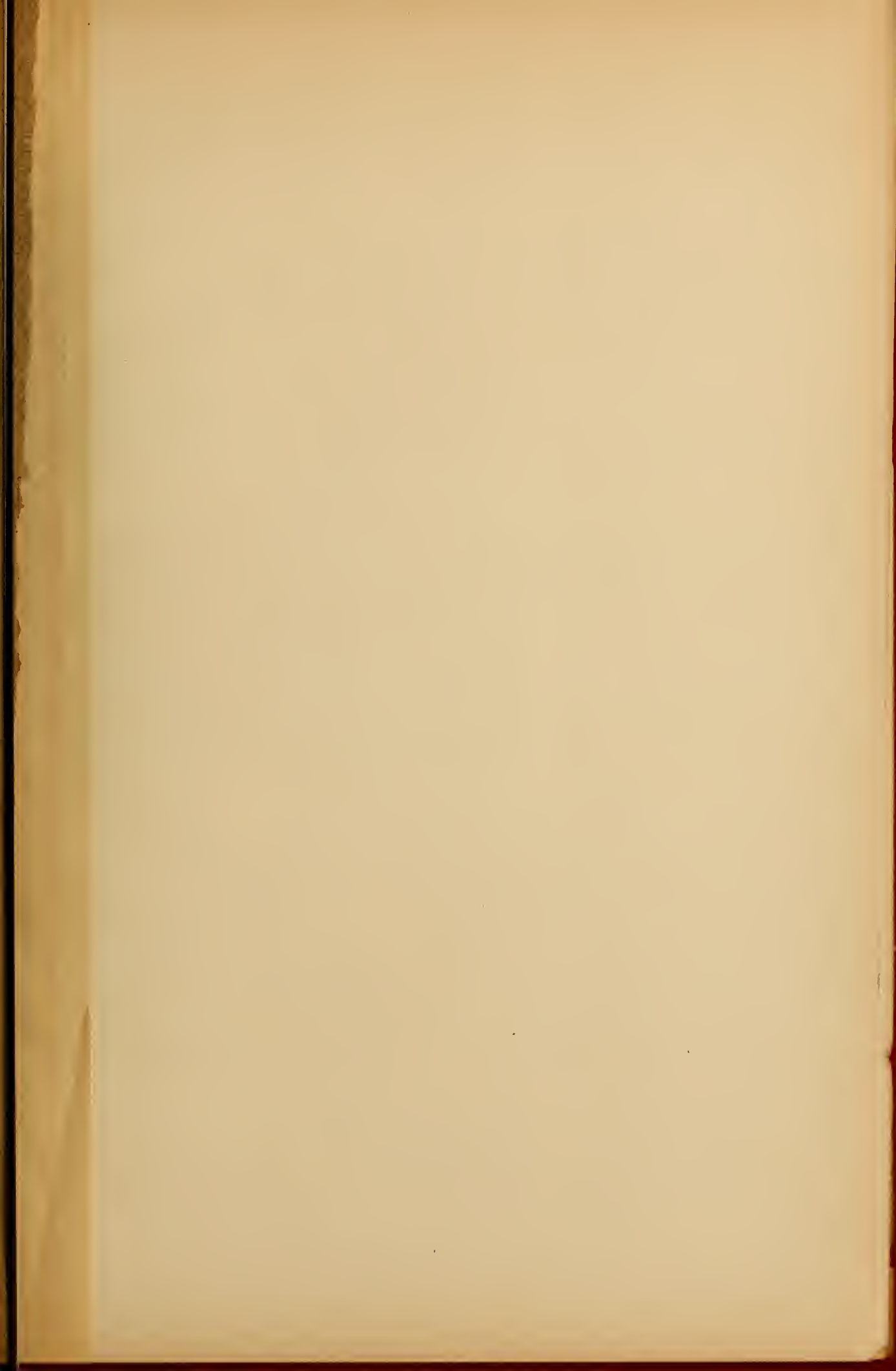


Class CJ 1836

Book .F8





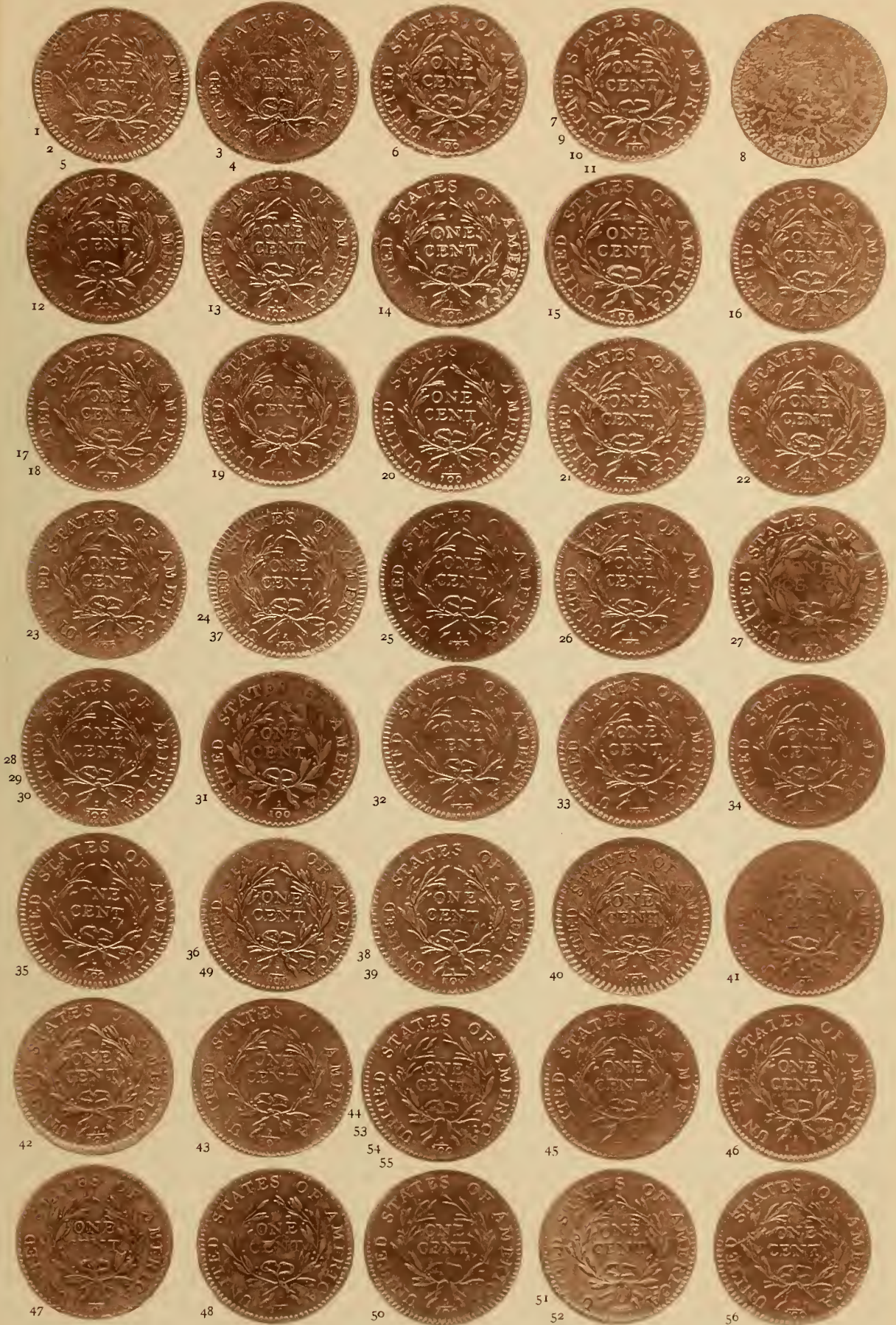


1794 CENTS. OBSERVES.



Arranged by ED. FROSSARD.

1794 CENTS. REVERSES.



Arranged by ED. FROSSARD.





VARIETIES

OF

UNITED STATES CENTS

OF THE YEAR

1794.

DESCRIBED AND ILLUSTRATED

BY

ED. FROSSARD,

MEMBER OF THE AMERICAN NUMISMATIC AND ARCHAEOLOGICAL SOCIETY OF NEW YORK,

AND

W. W. HAYS, Esq.,

WASHINGTON, D. C.

THE  
AMERICAN  
NUMISMATIC  
AND  
ARCHAEOLOGICAL  
SOCIETY  
OF  
NEW  
YORK

NEW YORK:  
PRIVATELY PRINTED.

NEW YORK:  
PRIVATELY PRINTED.

1893.

CJ1836  
.F8

-35 069  
'03.

## PREFACE

---

IN view of the growing interest shown by Americans in our National Coinage, it is taken for granted that a work treating exhaustively on an important division of the subject will be received with pleasure by collectors of United States coins.

Among the regular series of the United States Mint, the early copper issues have always attracted the special attention of collectors. The remarkably appropriate and sufficiently diversified designs, the relative abundance of the issues, and the varieties in dies have proved an attractive field of investigation, and will, no doubt, continue to absorb much of the attention of present and future collectors.

The types and varieties of the 1793 Cents have formed the subject of several exhaustive treatises, and while two or three combinations of dies escaped the attention of the workers on the subject, it may be said that all are known and easily recognized.

In the year 1794, only one type of Cents was issued at the mint, but a large number of obverse and reverse dies, slightly varying from each other, were used, leading, in an attempt at a correct classification, to the same perplexities which our northern neighbors met, when endeavoring to convey to a collector a correct and distinctive description of each of the famous Bouquet or Sou Series.

Thus far there have been at least three publications on the subject of 1794 Cents : of these, the first by Dr. E. Maris of Philadelphia, was unquestionably the best. References to it are still made by dealers and collectors in catalogues and lists.

Dr. Maris had the advantage of entering the field at a time when 1794 Cents were easily obtained, and his descriptions were from the coins themselves ; hence his work, as far as it goes, is excellent and authoritative. But new varieties and combinations of dies have since been discovered both by himself and others. His list, therefore, while good so far as it goes, is no longer in touch with the requirements of advanced collectors.

It is not asserted that the list herewith presented is complete, but it is believed that it comprises all the varieties enumerated in former lists and that several additions of undescribed varieties have been made. The list also possesses the advantage of illustrating, by the photogravure process, every variety described, a feature which but one of the former lists attempted, and that in part only.

In presenting the result of a careful study of the subject, it is proper to state, that, in the arrangement, an endeavor has been made to follow, as nearly as possible, the probable order of emission of the die varieties at the U. S. Mint, beginning with those resembling the 1793 issue, continuing with those purely of the 1794 type, and ending with the varieties more closely resembling the 1795 issue. It has also been endeavored to make each description so complete in its details as to enable the collector to distinguish each specimen, with or without the assistance of the plates.

To do this with more facility, the salient, though often minute characteristics which distinguish the greater part of the varieties are carefully noted; these once recognized, the work of identification and classification will be found comparatively easy.

It is but just to my collaborator, Mr. Hays, the man through whose patience and perseverance a complete set of the 1794 Cents was collected, that the varieties in this new classification should bear his name. For this reason, it is desired that when referring to this work the varieties should be announced and known as HAYS, No. 1, 2, 3, etc.

Special thanks are due to Dr. Thomas Hall, Boston, Mass., Henry Phelps, Esq., Washington, D. C., and J. F. Anger, Esq., New York, for valuable advice and assistance.

ED. FROSSARD.

NEW YORK, January, 1893.



AMERICAN COIN SCALE.



## THE 1794 CENTS.

---

### GENERAL DESCRIPTION.

PROFILE bust of Liberty facing to the right. The hair is confined around the head by a narrow ribbon, and falls, in graceful curls, behind the shoulder. Behind the head is a Liberty Cap on staff, the end of which projects in a line parallel to front of breast, above, the legend, LIBERTY, curving; beneath, the date.

*Rev.* A wreath formed of two laurel branches, bearing berries, is united at the bottom by a ribbon with double bow, and encloses the words ONE CENT. In the exterior angle, formed by the ends of ribbons, is the fractional value  $\frac{1}{100}$ ; around the wreath the legend, UNITED STATES OF AMERICA.

The border is milled. The edge is inscribed ONE HUNDRED FOR A DOLLAR, in rare instances FOR is omitted. Size, 18 to 18½, American scale, 27 to 28 millimeters.

### VARIETIES.

#### No. 1.

*Obv.* Head of 1793. L in legend distant from cap and T from head; the date straight, with 4 close to bust, slightly tilting to right.

*Rev.* Eight berries to left branch, the two upper ones very small and close to stem, and eight to right; in second group, two appear on outside in line apparently on same stem, the outer weak and feebly defined; first T in STATES close to S, second T distant from E, mint dot close to first perpendicular of N in CENT. Both A's in AMERICA high; in CENT, C is small and high and T low.

## No. 2.

*Obv.* The profile remarkably fine, the chin double, a broad lower lock terminates in a short inward bending point; both legend and date are nearer to milling than to bust. In LIBERTY, B and TY are high; date curved and 9 large.

*Rev.* Same as No. 1.

## No. 3.

*Obv.* Same as No. 2.

*Rev.* Wreath stems cross at right of ribbon knot. The stem of the left branch appears to pass around the knot of ribbon rather than through it, showing a portion of the field about the knot: eight berries to left and seven to right branch. STATES spaced as in the last, but STA is on a higher plane than TES. In AMERICA, A M E widely spaced, last A is high; O in ONE low; in CENT C is high and T low.

## No. 4.

*Obv.* Head resembles that of No. 1; the staff closer to bust, broadening toward end; LIBERTY near milling, with L and T distant from cap and head; the date wide, straight, and equidistant from bust and milling, with 1 distant from hair, 9 large, 4 distant from bust, too small, and slightly tilted to right.

*Rev.* Same as No. 3.

## No. 5.

*Obv.* The hair terminates in eight locks, the staff flat, and expanding toward the end; farther from bust than in No. 4; LIBERTY large and wide; R T Y widely spaced; milling wanting, slight or imperfect.

*Rev.* Same as No. 1.

## No. 6.

*Obv.* Two coarse locks below the cap end abruptly; slender staff extends nearly to milling. In LIBERTY, R is much closer to hair than L is to cap; date curved, 79 close; sharp 4 nearly touches bust.

*Rev.* Six berries to each branch, ribbon bow out of position, higher on left side than right, and distant above knot, stems short, and point to stand of A and curve of U. In STATES, A is closer to first than to second T; in fraction the dividing line is short and not parallel with top of 100.

## No. 7.

*Obv.* Same as No. 6, but is usually found in this combination with a crack from border, through the upright of E extending in a straight line nearly to centre of hair.

*Rev.* Nine berries on left, one between and near base of lower leaves on outside, another touching top of first inside leaf; six on right branch — the lowest one is imperfect and blends with top of leaf; top leaves of branches touch. The end of right ribbon long and perpendicular, nearly reaching the lower part of last o in fraction; the left section of bow imperfect in its lower part; left stem short and close to ribbon — right one long and widely separated from it; U and N of UNITED almost touch at the top, E slightly out of position, D is low; in STATES first T is low and distant from S; T E S widely spaced.

## No. 8.

*Obv.* Same as No. 6.

*Rev.* Lettering small and regular; dividing line in fractional value short, the denominator close to milling. The great and distinguishing feature of this variety is a circle of eighty-seven minute stars at or between the points of milling.

## No. 9.

*Obv.* The hair terminates in seven locks, the lower one distinct and heavy, in the upper part bulging over the back part of neck in a peculiar manner not found on any other die. In LIBERTY, L is close to cap, I B widely spaced and RT nearer to head than to milling. In date 1 is distant from 7, but its top is not so close to lower lock as in No. 6, the point of sharp 4 just touches the bust.

*Rev.* Same as No. 7.

## No. 10.

*Obv.* The hair terminates in seven locks; the lower one curves inward and the others are long, waving, slender and irregular in position. LIBERTY is slightly nearer cap and head than milling. Tall, curved date regularly spaced, 1 almost touches hair and 4 nearly touches bust. This obverse is found with a crack in die extending in a nearly horizontal line from border through second lock of hair from bottom; another slight crack extends upwards between 1 and 7 of date, and one connecting with this at 7, curves across point of bust to end of pole.

*Rev.* Same as No. 7.

## No. 11.

*Obv.* The seven termini of hair are rather thick; the three upper ones widely spaced. L in LIBERTY near cap, and bottom of R, about same distance from hair. In date 1 is near the lower lock and sharp 4 nearly touches bust; the stem of 7 long and slanting toward 1. This obverse is found with a crack in die, from milling to hair just below the cap.

*Rev.* Same as No. 7.

## No. 12.

*Obv.* Same as No. 11; generally found with the break in die.

*Rev.* Nine berries to left branch, the three near top microscopic and stemless, and seven to right. Right ribbon approaches short dividing line, and then turns to right forming angle, left ribbon diverges to left, the knot of ribbon bow is double. In N of ONE the connecting line of the perpendiculars is prolonged at its lower extremity. In STATES the first T and A are joined at bottom, and first A in AMERICA is distant from M.

## No. 13.

*Obv.* Same as No. 12.

*Rev.* Berries large; six to left and five to right branch, the upper one without stem. The branch stem on right points directly to stand of A, and does not connect with ribbon. In STATES first T and A are both out of position — T low and A high, leaning to left and distant from second T. In AMERICA M is slightly low and distant from E. Knot to ribbon bow is double, and lower end of right ribbon is detached.

## No. 14.

*Obv.* Bust pyramidal, the hair locks short, the fifth from bottom fine and separated from mass of hair. In LIBERTY R is nearer to hair than L to cap; date tall and close; 4 farther from bust than 1 from hair.

*Rev.* Seven berries to each branch; the lower one on left touches bow, right ribbon diverges and is distant from fractional line. In STATES first S and A are slightly high and first T out of position, top leans toward S; A in AMERICA small, high and slightly out of position to left.

## No. 15.

*Obv.* Bust low; hair ends in seven locks; end of pole touches milling; R in LIBERTY is high; date widely spaced and close to milling; 1 nearly touches hair and 4 is distant from bust.

*Rev.* Seven berries to each branch; right ribbon extends nearly to centre of stand of A. All letters evenly spaced but C in CENT is too small. This reverse is found with a crack in die from milling under end of left ribbon merging 1 of 100 with the fractional line and extending through last A in AMERICA to milling.

## No. 16.

*Obv.* Same as No. 15.

*Rev.* Six berries to left branch and seven on right; end of right ribbon distant from A and left equally distant from U of UNITED and 1 of 100; first T in STATES a trifle high, C in CENT shorter than E, and T lower than N. This reverse is found with a slender crack in die through UNIT of UNITED.



## No. 17.

*Obv.* A human-ear-shaped depression in the hair, below the ear at back of the neck, is peculiar to this variety; the lower curl ends with a sharp inward curve; L and R of LIBERTY are equally distant from cap and head; date is wide, 1 near to hair, 4 close to bust. This obverse is slightly cracked from L in LIBERTY through bust to milling near 4 in date.

*Rev.* Six berries to left and seven to right branch; c in CENT too small; both A's in AMERICA high, the first one slightly out of position to left and distant from M; numerator of fraction is tall and touches dividing line to left of centre.

## No. 18.

*Obv.* Upper locks short and coarse, lower ones fine; LIBERTY widely spaced with L far from cap and R from hair; the date is small and distant from hair and bust, the 4 is short. The die cracked from near Y to nose and diagonal break extends along the cap through the head near ear to end of pole and milling.

*Rev.* Same as No. 17.

## No. 19.

*Obv.* Two short locks abruptly terminate in truncated angle just below the pole of cap; next lower one is separated from hair, the others long and wavy. LIBERTY and date both close to milling, the former distant from cap and head, and the latter with 1 and 4 distant from central figures.

*Rev.* Small wreath bearing seven dot-like berries on each side. In CENT, c is small, the centre dot touches first perpendicular of N; the wreath stems are short. This reverse is found with a double break, one from milling between A and T of STATES curves into O of ONE, the other passes through D of UNITED to top of c in CENT, then curves into N of ONE.

## No. 20.

*Obv.* Same as No. 19.

*Rev.* Six berries on each branch; c in CENT small, bows distant above knot; first and last A in AMERICA distant from M and c; stems to wreath and fractional line longer than same in reverse of 19, left bow is distant from lower berries.

## No. 21.

*Obv.* The hair is very scant and terminates in thin broken locks. LIBERTY large and close to milling, distant from cap and head; date large, wide and curved, with 1 and 4 about equally distant from hair, bust and milling; pole distant from bust.

*Rev.* Wreath has five berries to left and six to right branch; in AMERICA A is distant from M and I from c; all other letters in legend correctly spaced; dividing line of fraction long. This reverse is usually found with breaks in

die from milling through first *s* in STATES to *E* in CENT, from milling through *E* in STATES to top of left wreath, another faintly visible from *E* in ONE touching *T* in CENT to berry on right wreath; there is also a short break to left of *o* in OF.

## No. 22.

*Obv.* Same as No. 21.

*Rev.* Centre dot on first stand of *N* in CENT; eight berries to left half of wreath, of which two dot-like ones touch the stem of upper leaf; the two lower ones are entirely under left ribbon bow and nearer the knot than usual; on right branch there are seven berries, the top one without a stem; dividing line of fraction very short. *E* and *R* in AMERICA are close, all other letters are correctly spaced.

## No. 23.

*Obv.* The hair terminates in eight locks, the lower one pointing directly to top of *I* in date; the *9* is large, the *4* small and distant from bust. LIBERTY well spaced, near milling; *L* and *R* distant from cap and head. This obverse is found with and without the bases of letters indented.

*Rev.* Berries small, six to each branch, the upper one on left branch very small, attached to stem of upper leaf, distinctly seen with a good glass. *I* in UNITED low and second *T* in STATES low and distant from *E*. In AMERICA, *A M E* and *R I C* widely spaced with *c* low and the point of its bottom curve almost touching *A*. The *I* in fraction is short and distant from long slender dividing line.

## No. 24.

*Obv.* Same as No. 23, except found with slight break from cap to lower lock, and bases of letters in LIBERTY are indented.

*Rev.* Wreath distorted, ten berries on left branch and eight on right; the lower outside one on left has a long stem; in second group on right three berries are in line, the outer one disconnected from stem. Bow out of position to left; right ribbon very long and almost severed near middle. In UNITED STATES letters are grouped in pairs, thus: UN IT ED ST AT ES; in AMERICA *A M E* widely spaced and *R* which is close to *E* has an unusually long tail which joins base of *I*; bases of letters are indented. This die is found with crack from milling through *R* to wreath.

## No. 25.

*Obv.* The hair terminates in seven locks, the lower one pointing directly to top of *I* in date which is large and wide, with *4* nearer to bust than in No. 23. Letters in LIBERTY well spaced and indented at base, *L* and *R* though dis-

tant from cap and head are a trifle nearer than in No. 23. Horizontal break in die from milling on right to point of chin and from hair below cap to milling on left.

*Rev.* Same as No. 23, except that all letters are indented.

No. 26.

*Obv.* The hair terminates in eight long locks of which the fifth from bottom is double; the lower one points to top of 1; date is large, widely spaced and close to milling; LIBERTY near milling, L and R distant from cap and head; slight break in milling over LL.

*Rev.* Six berries to each branch of wreath; the upper one on left marred by break in die, and third from bottom on long stem, with leaf showing over stem, between berry and branch. The ribbon bow lies close to stems of wreath, right stem points directly to stand of A. This reverse is generally found cracked from milling through s of STATES to left branch of wreath and the die also appears to have been injured, leaving many slight marks or incisions about the left wreath and top of the right one.

No. 27.

*Obv.* Same as No. 26.

*Rev.* Six berries to each branch; right stem short and pointing directly to stand of A. In STATES, A is slightly high; all other letters well spaced and placed. Six breaks in die from milling pointing to centre somewhat mar wreath; the first on left ribbon end, the second through 1 of UNITED, the third between UNITED and STATES, the fourth between A and second T of STATES, the fifth through A of AMERICA, the sixth a prolongation of right ribbon end. The knot of ribbon bow large and dividing line of fraction short. The attention of collectors was first called to this reverse in 1888 by W. W. Hays. Two other specimens have since been found by him.

No. 28.

*Obv.* Same as No. 26, but an additional break is shown in die from L curving behind top of cap to milling.

*Rev.* Five berries to left branch, only a single one of which is at side of left bow which is higher than the right; six on right branch; bows join at left of the knot, long fractional line, numerator 1 high, T in CENT low.

No. 29.

*Obv.* Hair terminates in seven slender locks; LIBE on a lower plane than RTY; date wide and low, the 9 merging into the milling; the die shows breaks, from milling, touching E to centre of hair, from left through cap to hair, also a slight one across the hair midway between the two described.

*Rev.* Same as No. 28.

## No. 30.

*Obv.* Bust low, seven coarse locks to hair; LIBERTY near milling, R T widely spaced far from head; date wide and near milling with top of 4 close to bust.

*Rev.* Same as No. 28.

## No. 31.

*Obv.* Same as No. 30.

*Rev.* Six berries to left branch with only a single one opposite left bow; seven berries on right; bows are symmetrical in shape and in proper position, joining knot directly under their centre; 100 in fraction distant from dividing line; T A T in STATES and C A in AMERICA are widely spaced; tops of branches close together.

## No. 32.

*Obv.* More field shown between cap and hair than usual; LIBERTY touches milling, the L further from cap than in any other variety; I B and E R widely spaced, BE close. In date 1 7 9 are large and widely spaced, 4 close to 9 and low.

*Rev.* Six berries on left branch and five on right; D in UNITED is a trifle low. In AMERICA, the uprights of M are defective at top and R has a long tail. Fractional line is very long and connects with end of perpendicular right ribbon.

## No. 33.

*Obv.* Bust short, without the curved line at bottom where it joins the lower lock. Hair thick and in wavy lines with lower locks decidedly shorter than in previously described varieties; LIBERTY equally distant from head and milling, with L further from cap than R from head and a light hyphen-like break between T and V. Date is tall and close, 1 touching hair and 4 bust. Break in die from milling at top of cap along the edge and curving from lower point through field, lower locks and 17 of date to milling.

*Rev.* Seven berries to left and six to right branch. In CENT, T is low, its stand is very close to top of first leaf on inside of right branch. Both A's in AMERICA widely spaced from adjacent letters; dividing line in fraction long. A break in die extends from milling between STATES and OF through branch to N in ONE.

## No. 34.

*Obv.* Same as No. 33; found with and without break in die.

*Rev.* Six berries to each branch. Centre dot on first stand of N in CENT close under projection of top; first T in STATES slightly tilts to left; T in CENT not so near top of leaf as in 33. This reverse is found with a crack in die from milling, dividing U in UNITED, curving through branch at left of C in CENT to leaf above it.

## No. 35.

*Obv.* Broad head with coarse curls; fifth hair from bottom severed from lock; the chin small and pointed; LIBERTY and date distant from milling, while cap touches it; L distant from cap and R near head. In date, I touches hair and is distant from 7, other figures are close; top of 4 almost touches bust; defect in die at point of junction of cap and hair.

*Rev.* Six berries to left and five to right branch; A T in STATES, A M, R I and C A in AMERICA are widely spaced; T in CENT low with imperfect double leaf below it; ribbon bow upright but joins knot to left, right ribbon detached from knot; dividing line in fraction short. A defect is found in this die under top of left wreath similar to that found in No. 26.

## No. 36.

*Obv.* Same as No. 35.

*Rev.* Seven berries to each half of wreath; mint or centre dot on upper angle of N in CENT and perfect double leaf under T; in fraction, I in 100 distant from short dividing line, and last o high; die is defective in UNITED, scollop work showing under the letters.

## No. 37.

*Obv.* Heavy hair with eight locks, the lower one double, terminating in two curved ends, of which the inner one emerges from the outer or upper one and points directly to base of I in date, the single hair on the end of upper lock inclines downward to left in a line parallel with the lower edge of cap, the upper edge of which deflects downward, breaking the curve when approaching the hair; LIBERTY and date distant from milling; L a trifle further from cap than R from hair. In date, I is very near or touches hair, 7 small, 4 near bust. This obverse is found with a small break in field opposite ends of fifth and sixth locks, counting from bottom.

*Rev.* Same as No. 24.

## No. 38.

*Obv.* This obverse very closely resembles that of the last (No. 37) in the appearance and position of legend and date with regard to head, bust and milling, and has been heretofore classified as the same; but a close inspection shows slight differences that make it impossible for it to have been struck from same die. In this, LIBERTY is a trifle nearer the milling, L to cap and RT to hair than in No. 37; the upper edge of cap is regularly curved; the upper lock is decidedly nearer the cap, and consequently less field is shown between the lock and edge of the cap, and notably, the single hair terminating the upper lock instead of inclining downwards as in 37, leaves the lock in a nearly horizontal position; also, the pole is not so wide at the end as in 37.

Other slight differences can be observed, but are too minute to be described. This is found with slight break in field behind the head near the hair.

*Rev.* Six berries to each branch of wreath, the fourth on left side merges into top of leaf; ribbon knot large and prominent; very long fractional line, the longest in the series, with numerator and last o of fraction very near or touching it. In the imperfect double leaf under T of CENT only the top of the one at right shows, appearing as a coarse dot in field to left of two lower berries. First s and T in STATES quite close and A distant from M in AMERICA.

No. 39.

*Obv.* Hair longer and more abundant than in 37. The lower lock double as in 37 and 38, but differing from them in the direction taken by the curved point of the lower lock in the double one; in this it points directly to the middle of the stand of 1 in date, while in 37 and 38 it points to the base of same figure. Except as above noted, this obverse closely resembles those of 37 and 38.

This is found with two small angular breaks in field to left of hair; the inner one club-shaped, pointing to cap.

*Rev.* Same as 38.

No. 40.

*Obv.* Head resembles 39, but LIBERTY and date are closer to milling, the lower lock not double, its curve points to centre of 1 in date. A break in die is found to left of hair, similar to that in No. 39, but it is a trifle nearer to the cap; another slight break appears faintly between this and milling.

*Rev.* ONE CENT high in wreath, seven berries on left, and six on right branch; stems short; bow close to knot and ends of ribbon approach letters of legend; dividing line is very short; deep, saw-tooth milling.

No. 41.

*Obv.* Same as No. 40, but slight outer break is plainer.

*Rev.* Six berries to left and seven to right branch. There is but one berry near the left ribbon bow; the ends of ribbon are about equally distant from letters of legend and fraction; A in STATES more distant from first than second T; except RI, letters in AMERICA widely spaced. This variety was discovered by W. W. Hays, in 1889.

No. 42.

*Obv.* Same as No. 40, but the slight outer break has developed.

*Rev.* Seven berries to each branch; bow small and distant above knot; ends of ribbon much nearer to fraction than to letters of legend; first T in STATES a trifle high and leans to left; breaks in die from milling to wreath between U and N and from milling along the upright of D in UNITED; also

slight break from left stem through wreath, past c in CENT to second inside leaf of left branch. Numerator of fraction nearer dividing line than the denominator, in which first o is low.

## No. 43.

*Obv.* Planchet generally large, though sometimes found small; points on upper locks of hair quite short; cap distant from milling. LIBERTY about equally distant from milling and hair; date curved in line with milling and midway between it and bust.

*Rev.* Eight berries to left and seven to right branch; left ribbon a trifle longer than the right and defective where it joins the knot; in fraction, dividing line is long, and in 100, 1 is small and last o large and high.

## No. 44.

*Obv.* Heavy lower lock terminates in slender curve pointing to top of 1 in date, which is widely spaced from 7; LIBERTY nearer to milling than to cap or hair, the T slightly out of position. The distinguishing feature of this obverse is a slight break in the die extending from milling to end of pole, giving it the appearance of being split.

*Rev.* Six berries to left and seven to right branch, D in UNITED out of position and low. In AMERICA, A and M are too large, the right stand of former being double cut on upper half; E is small and low; in CENT, C is small and low; stems long; ends of ribbon much nearer to the fraction than to the letters of legend, dividing line short.

## No. 45.

*Obv.* Hair ends in seven locks; LIBERTY distant from milling, with R a trifle nearer to head than L to cap; date symmetrical and well-proportioned, with 1 touching hair and top of 4 very close to bust. Milling on left half of circumference deep and serrated, protecting cap and hair from abrasion; the remainder usually light or wanting. This obverse is usually found with a slight crack in die from milling to bust through 9 of date.

*Rev.* Berries large; seven to left — the fifth one very small — and six to right branch; stems very short. In UNITED, D is slightly low and out of position; in STATES, second T low and distant from E; in CENT, C small and NT large and low. Ribbon bow high and to left of knot. A break in die extends from milling to wreath, touching left of last s in STATES.

## No. 46.

*Obv.* Same as No. 45.

*Rev.* Seven berries to each branch of wreath; ribbon bow small and distant above large knot; A T E in STATES and A M E in AMERICA widely spaced;

dividing line of fraction wanting. A break in die extends from milling through D in UNITED to left wreath.

No. 47.

*Obv.* The hair flows back in heavy, separated curls, portions of the field showing between the lower ones; LIBERTY distant from milling, L and R rather near cap and hair, E too small; I in date is very near or touches hair, and 4 the bust; the 7 a trifle low, giving stem the appearance of being too long.

*Rev.* Seven berries to left and six to right branch. Ribbon bow high, the berries at its left close. In fraction, dividing line short, middle figure in 100 too low. This reverse shows numerous small breaks in die as follows: From T in UNITED and first T in STATES to wreath; also through o in ONE and c and E in CENT, diagonally through ribbon bow and right branch; also in each ribbon bow there are slight elevations and another between end of right ribbon and milling.

No. 48.

*Obv.* Same as No. 47, but always found with break in die through lower lock along lower edge of bust to top of 4, thence diagonally upward connecting with break from hair below the ear, across the bust parallel with pole to milling; also one from milling up through 4 to bust.

*Rev.* Berries large, six to each branch. Ribbon bow distant above knot, two berries at left further from bow than in 47; right stem shorter than left. Legend in heavy letters, quite regular, except R in AMERICA, which is high. Heavy short break in die on E of CENT, extending to second stand of N in ONE.

No. 49.

*Obv.* Depression in the hair opposite the centre of cap not seen in any other variety. Lower lock is unusually wide; the single hair terminating the fifth lock from the bottom is detached. In date, I distant from 7, close to hair, the 4 tall. LIBERTY is distant from milling, with L twice the distance from cap that R is from hair. Heavy, oblong break in die over milling and field on left.

*Rev.* Same as No. 36.

No. 50.

*Obv.* Head of 1795. Hair terminates in five coarse locks, the lower one curling inward until it almost forms a circle. In LIBERTY, L is far from cap, R near hair, stand of T is opposite the forehead at its junction with hair. The date is large, wide and well spaced, equally distant from bust and milling.

*Rev.* Same as No. 44, but shows break in die from milling through first T in STATES, diagonally passing through E in CENT and last A in AMERICA to milling.



## No. 51.

*Obv.* Same as No. 50, but it is almost always found with a break in die, extending from milling between T and Y of LIBERTY to forehead and cheek.

*Rev.* Six berries to left branch, the lower one close to stem of branch and barely formed; seven to right branch; ends of wreath stems long and club-shaped. In fraction, numerator 1 touches short fractional line, 1 in 100 is tall; in UNITED, D is quite low; in STATES, first S is high, first T out of position, and last S low; AMERICA is well spaced, but E is small and C low, leaning to right.

## No. 52.

*Obv.* Very similar to No. 50 in expression of face and shape of head, but differs in other points as follows: The terminating curl of lower lock is lighter and forms a larger circle; in LIBERTY, L is nearer the cap, and base of T is over the hair rather than forehead; the pole is not so heavy, but longer, extending a trifle beyond the point of bust.

*Rev.* Same as No. 51. It is also found with a heavy break in die, extending from T in UNITED to C in AMERICA, and another from milling between O and F diagonally to U in UNITED.

## No. 53.

*Obv.* Same as No. 52.

*Rev.* Same as No. 44.

## No. 54.

*Obv.* Closely resembles No. 52, but LIBERTY is nearer milling, the letters are heavier, with L a trifle further from the cap and T closer to hair. In date, which is widely spaced, 1 is closer to the terminating curl of lower lock and 7 is higher with regard to the other figures than in No. 52.

*Rev.* Same as No. 44.

## No. 55.

*Obv.* Head very similar to preceding. L in LIBERTY is close to cap, base of T close to head and entirely over the hair; date compact and symmetrical, with 1 distant from curl of lower lock and 4 close to bust. There is a break in die from milling below the cap across the bust, touching ear, and through nose to border. This variety has not heretofore been described.

*Rev.* Same as No. 44.

## No. 56.

*Obv.* Exact head of 1795. The end of short lower lock points to base of I in date, not curling into a circle as in the preceding six varieties. In LIBERTY, L touches cap and T rests on hair. In wide date, markedly so between 7 and 9, I is close to milling, while 4 is midway between bust and milling. Break in die from milling through top of V diagonally to base of T at junction of hair and forehead.

*Rev.* Six berries to left and seven to right branch; top leaves almost joining. The stem on left passes through knot of ribbon at a sharper angle than the one on right; short fractional line; first o in 100 low; first s and T in STATES too close; in AMERICA, c is low; all letters in CENT a trifle out of position.

## TABLE OF EQUIVALENTS.

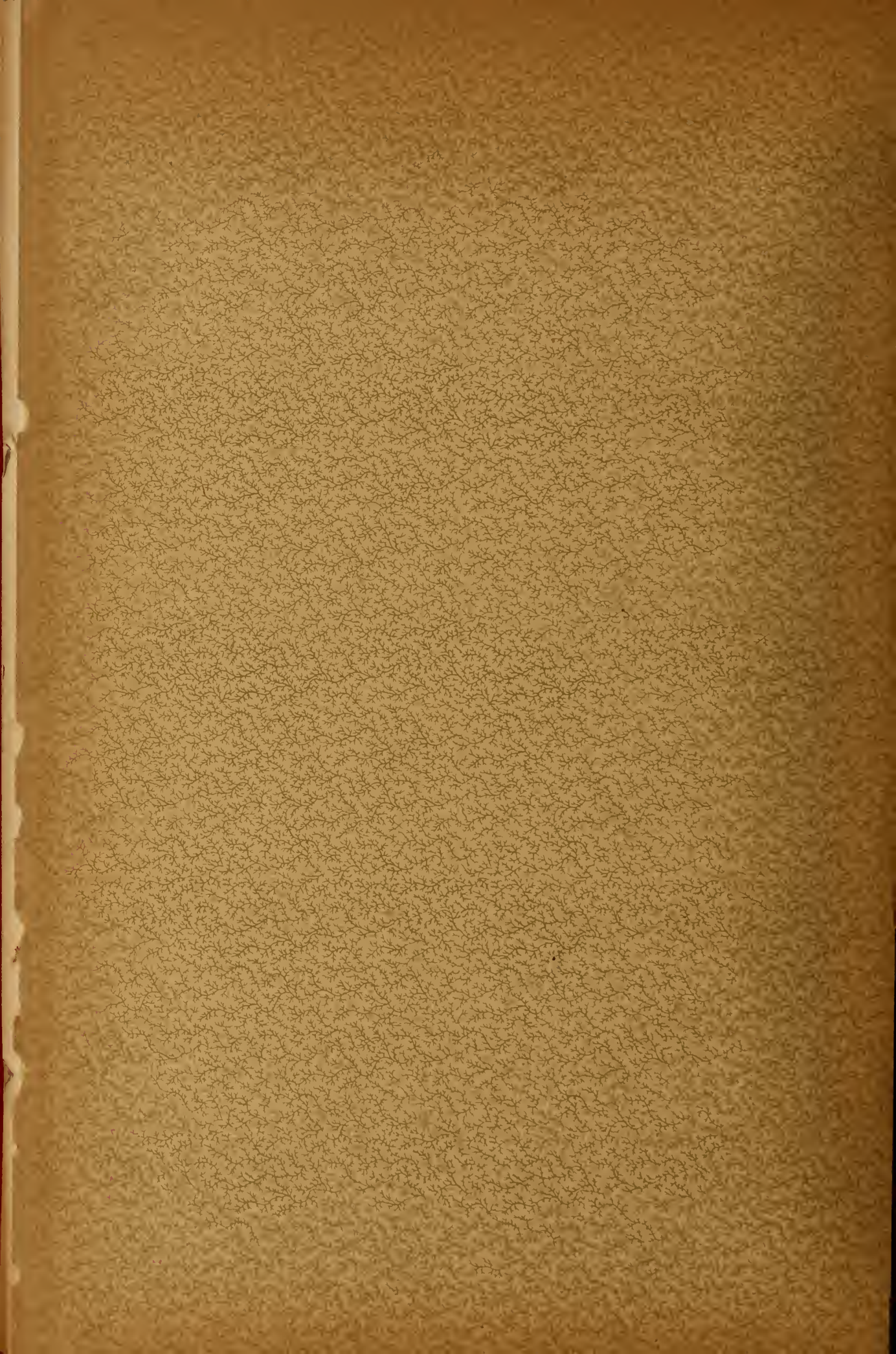
HAYS.	MARIS.	HAYS.	MARIS.
1.....	1	30.....	44
2.....	2	31.....	43
3.....	52	32.....	20
4.....	4	33.....	21
5.....	3	34.....	22
6.....	45	35.....	23
7.....	5	36.....	24
8.....	51	37.....	26
9.....	6	38.....	27
10.....	47	39.....	29
11.....	7	40.....	49
12.....	8	41.....	—
13.....	9	42.....	30
14.....	10	43.....	28
15.....	13	44.....	31
16.....	40	45.....	32
17.....	12	46.....	33
18.....	13	47.....	34
19.....	14	48.....	35
20.....	46	49.....	42
21.....	15	50.....	50
22.....	16	51.....	36
23.....	17	52.....	37
24.....	25	53.....	54
25.....	41	54.....	38
26.....	18	55.....	—
27.....	—	56.....	39
28.....	19	—.....	48
29.....	53		

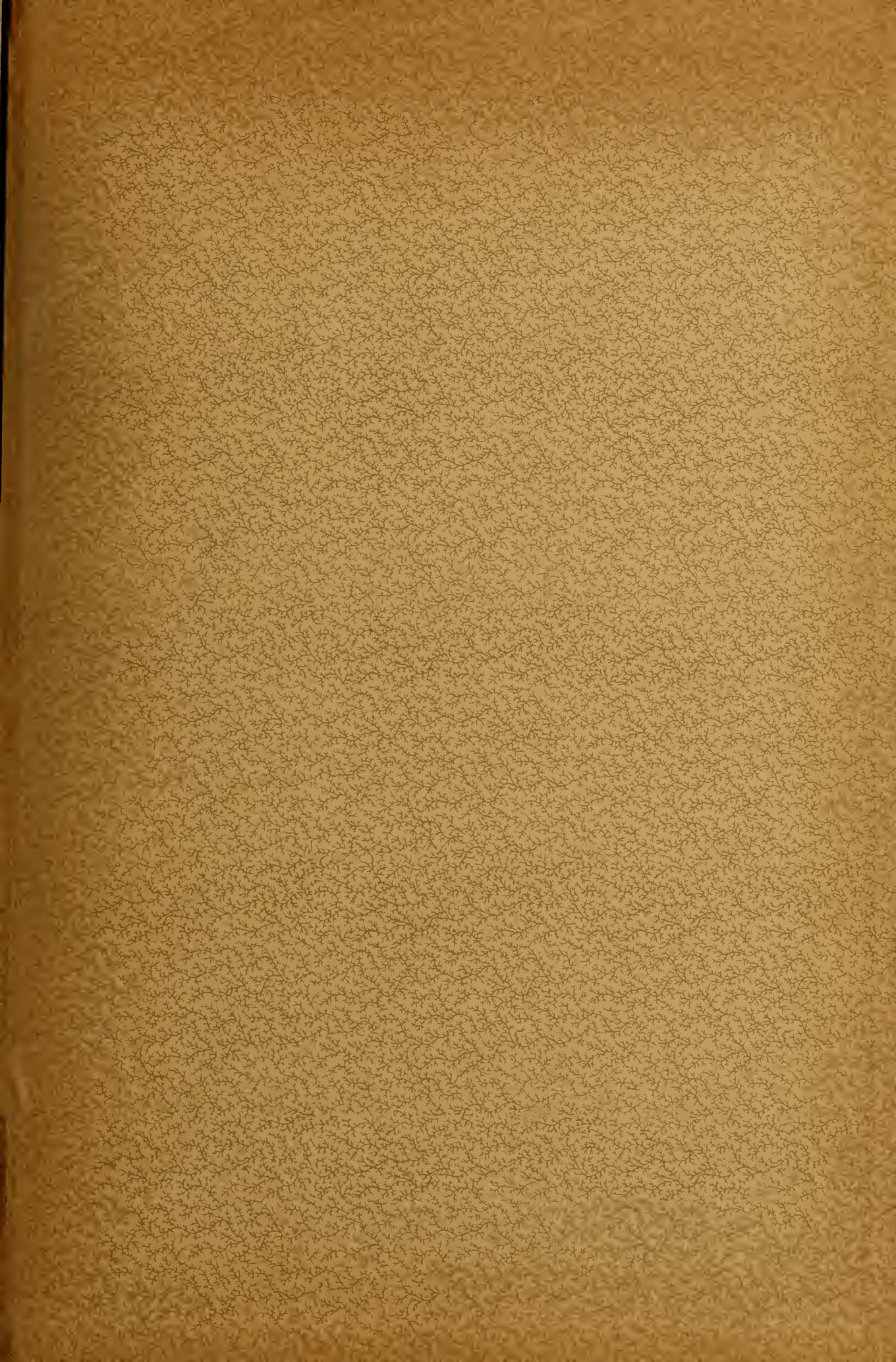
Never have seen M 48.











LIBRARY OF CONGRESS



0 027 211 088 8